



Agricultural Areas Annual Report 2025

In accordance with the
Agricultural Areas Conservation and Protection Act
(505 ILCS 5/1 et seq.)

Division of Natural Resources
December 31, 2025

AGRICULTURAL AREAS

2025 Annual Report

The Illinois Department of Agriculture (IDOA), pursuant to the *Agricultural Areas Conservation and Protection Act (505 ILCS 5/20.1)*, is required to prepare an annual report to the General Assembly on the location and size of all Agricultural Areas (also known as Ag Areas) created, modified, or dissolved during the past year. A copy of the complete Act is available at our web site listed below.

The Summary of Agricultural Areas (Ag Areas) lists the 24 counties with local County Board approved Ag Areas. This chart itemizes the total number of Ag Areas in participating counties, along with their respective acres, and summarizes the total number of acres in approved Ag Areas throughout the state.

In March of 2025, the Knox County Board approved Resolution 2025-016 which withdrew three parcels from the existing Agricultural Area. This resolution reduces the existing Agricultural Area by 271.40 acres.

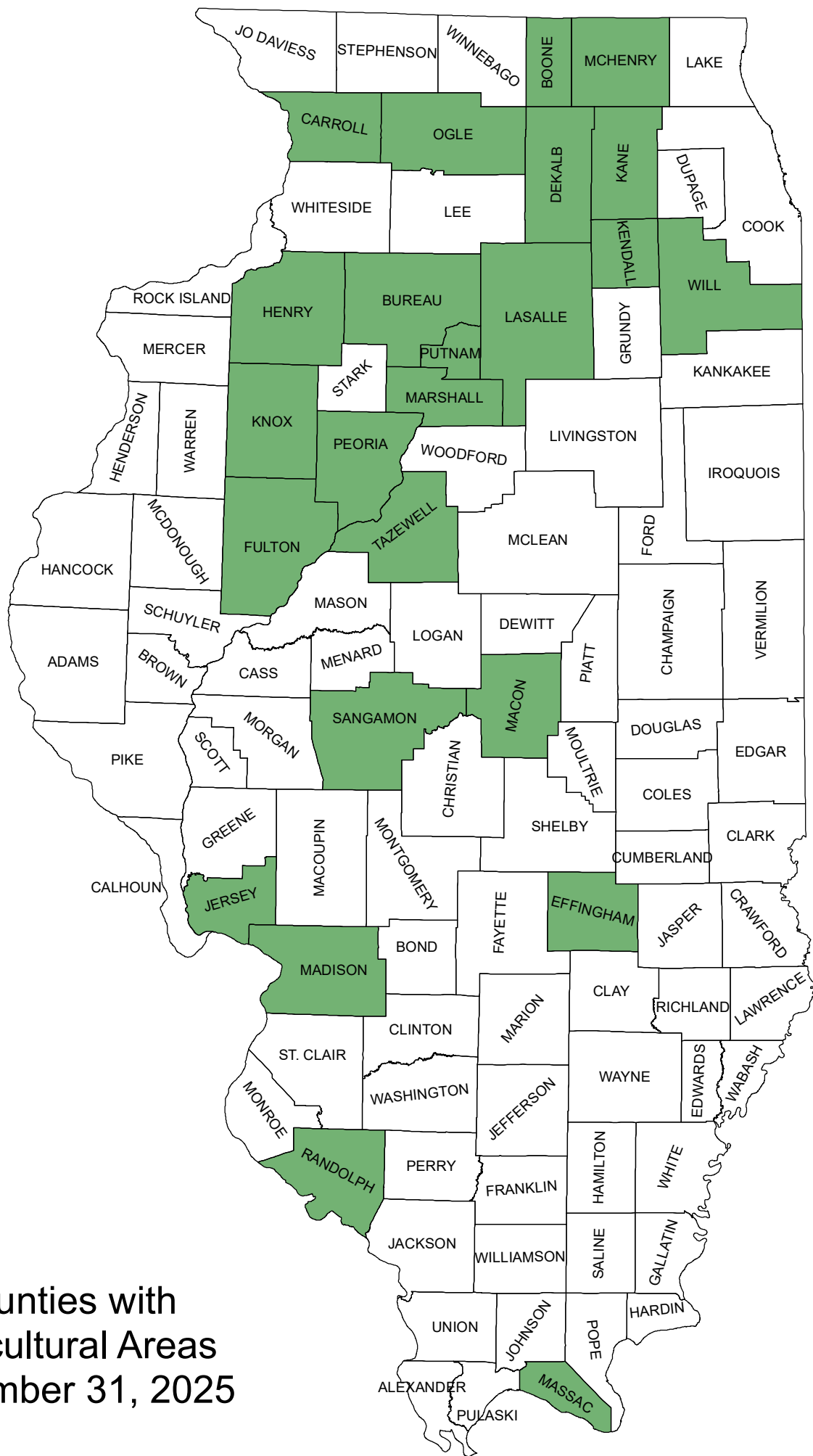
Currently, a total of 124,401 acres are enrolled in 60 Ag Areas in Illinois. A compilation of maps showing the 60 Ag Areas in the 24 counties will be available in early 2026 by referring to the Agricultural Areas Annual Reports near the bottom of this page <https://www2.illinois.gov/sites/agr/Resources/FarmlandProtection/Pages/default.aspx>.

For additional information, contact the Bureau of Land and Water Resources at 217.782.6297.

ILLINOIS DEPARTMENT OF AGRICULTURE
Summary of Agricultural Areas in Illinois
December 31, 2025

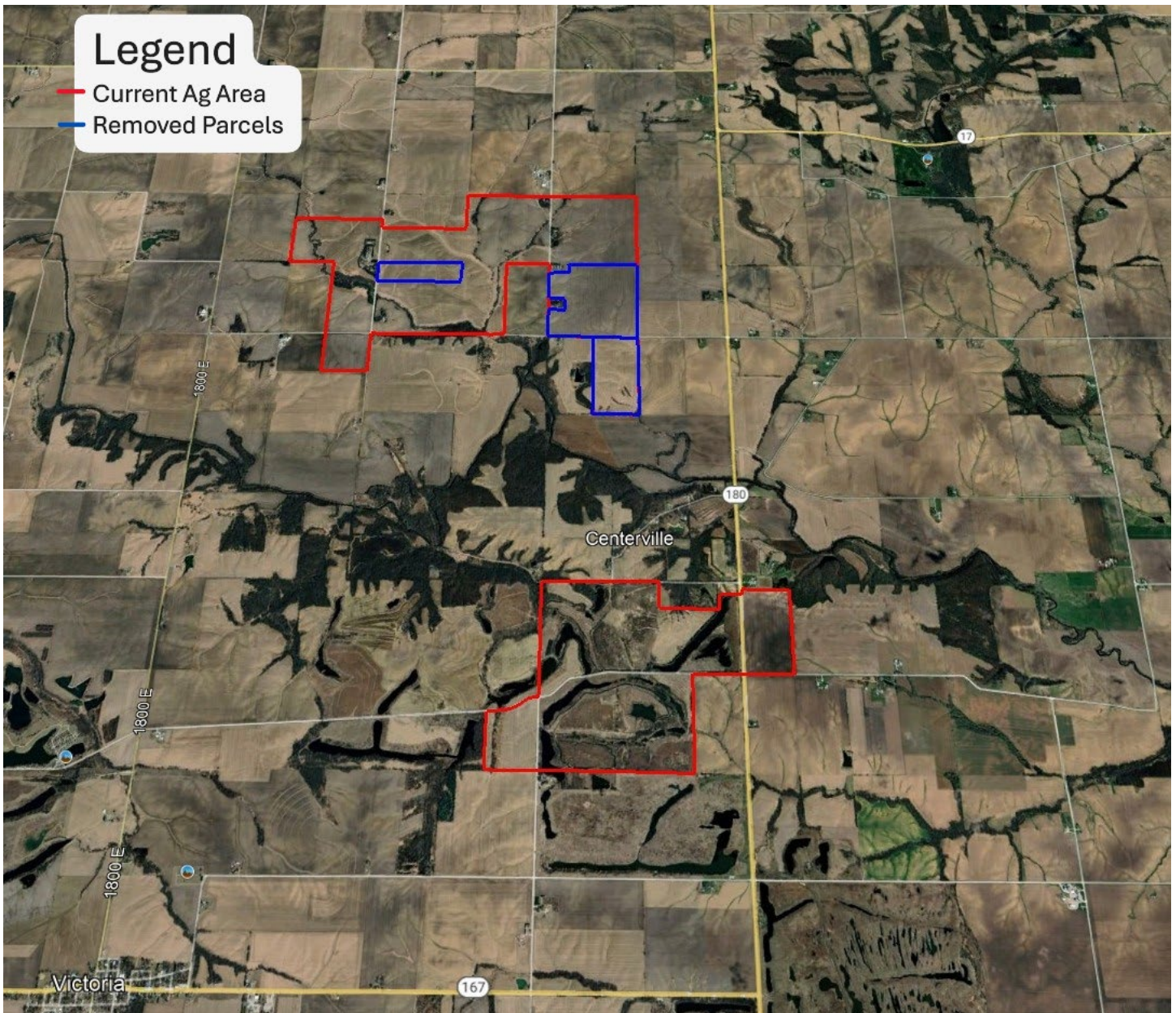
<u>County</u> <u>Acres</u>	<u>Number of</u> <u>Ag Areas</u>	<u>Acres in each Ag Area</u>	<u>Total</u>
Boone	2	2,544; 4,482	7,026
Bureau	2	1,962; 2,412	4,374
Carroll	2	4,548; 3,153	7,701
DeKalb	1	710	710
Effingham	1	615	615
Fulton	1	1,915	1,915
Henry	8	1,982; 2,480; 2,635; 3,097; 6,751; 3,129; 353; 2,308	22,735
Jersey	3	3,722; 9,637; 880	14,239
Kane	1	575	575
Kendall	3	566, 433, 787	1,786
Knox	1	1,464	1,464
LaSalle	5	659; 1,220; 847; 1,766; 804	5,296
Macon	1	1,693	1,693
Madison	2	1,400; 1,277	2,677
Marshall	5	953; 1,301; 762; 1,931; 467	5,414
Massac	2	500; 3,199	3,699
McHenry	9	2,518; 795; 2,078; 892; 6,782; 802; 4,466; 2,048; 415	20,796
Ogle	1	429	429
Peoria	3	393; 1,567; 589	2,549
Putnam	2	1,004; 6,204	7,208
Randolph	1	6,903	6,903
Sangamon	1	377	377
Tazewell	1	3,620	3,620
Will	2	469; 131	600
24 Counties 60 Ag Areas			124,401 acres

131 acres - Smallest Ag Area (Will)
9,637 acres - Largest Ag Area (Jersey)



Counties with
Agricultural Areas
December 31, 2025

Knox County Ag Areas



12/29/2025

Division of Natural Resources
Bureau of Land and Water Resources

