

**State of Illinois  
Department of Agriculture**



---

# **Agricultural Areas Annual Report 2023**

**In accordance with the  
Agricultural Areas Conservation and Protection Act  
(505 ILCS 5/1 et seq.)**

**Division of Natural Resources**

**December 29, 2023**

## **AGRICULTURAL AREAS**

### **2023 Annual Report**

The Illinois Department of Agriculture (IDOA), pursuant to the *Agricultural Areas Conservation and Protection Act (505 ILCS 5/20.1)*, is required to prepare an annual report to the General Assembly on the location and size of all Agricultural Areas (also known as Ag Areas) created, modified, or dissolved during the past year. A copy of the complete Act is available at our web site listed below.

The Summary of Agricultural Areas (Ag Areas) lists the 23 counties with local County Board approved Ag Areas. This chart itemizes the total number of Ag Areas in participating counties, along with their respective acres, and summarizes the total number of acres in approved Ag Areas throughout the state.

There are several additional this year. Will County created a new agricultural area, it contains ±131.64 acres during FY23. Kendall County has been added to the list of counties with Agricultural Areas, Kendall County has added three Agricultural Areas this year, these are their acreages ±433, ±566, ±787.

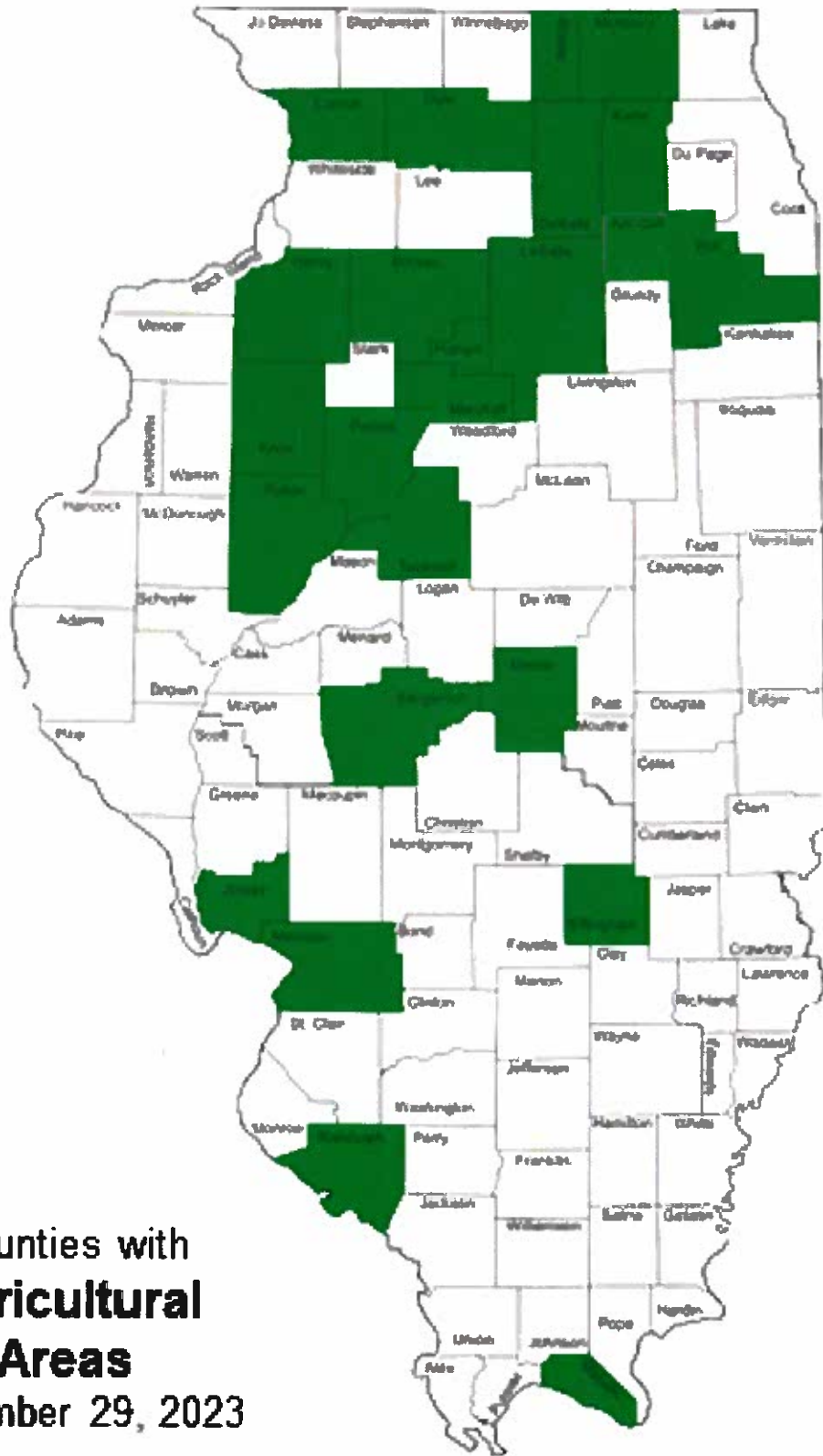
Currently, a total of 124,672 acres are enrolled in 60 Ag Areas in Illinois. A compilation of maps showing the 60 Ag Areas in the 24 counties will be available in early 2022 by referring to the Agricultural Areas Annual Reports near the bottom of this page <https://www2.illinois.gov/sites/agr/Resources/FarmlandProtection/Pages/default.aspx>.

For additional information, contact the Bureau of Land and Water Resources at 217.782.6297.

**ILLINOIS DEPARTMENT OF AGRICULTURE**  
**Summary of Agricultural Areas in Illinois**  
**December 29, 2023**

<u>County Acres</u>	<u>Number of Ag Areas</u>	<u>Acres in each Ag Area</u>	<u>Total</u>
Boone	2	2,544; 4,482	7,026
Bureau	2	1,962; 2,412	4,374
Carroll	2	4,548; 3,153	7,701
DeKalb	1	710	710
Effingham	1	615	615
Fulton	1	1,915	1,915
Henry	8	1,982; 2,480; 2,635; 3,097; 6,751; 3,129; 353; 2,308	22,735
Jersey	3	3,722; 9,637; 880	14,239
Kane	1	575	575
Kendall	3	566, 433, 787	1,786
Knox	1	1,735	1,735
LaSalle	5	659; 1,220; 847; 1,766; 804	5,296
Macon	1	1,693	1,693
Madison	2	1,400; 1,277	2,677
Marshall	5	953; 1,301; 762; 1,931; 467	5,414
Massac	2	500; 3,199	3,699
McHenry	9	2,518; 795; 2,078; 892; 6,782; 802; 4,466; 2,048; 415	20,796
Ogle	1	429	429
Peoria	3	393; 1,567; 589	2,549
Putnam	2	1,004; 6,204	7,208
Randolph	1	6,903	6,903
Sangamon	1	377	377
Tazewell	1	3,620	3,620
Will	2	469; 131	600
<b>24 Counties</b>	<b>60 Ag Areas</b>		<b>124,672 acres</b>

131 acres - Smallest Ag Area (Will)  
9,637 acres - Largest Ag Area (Jersey)



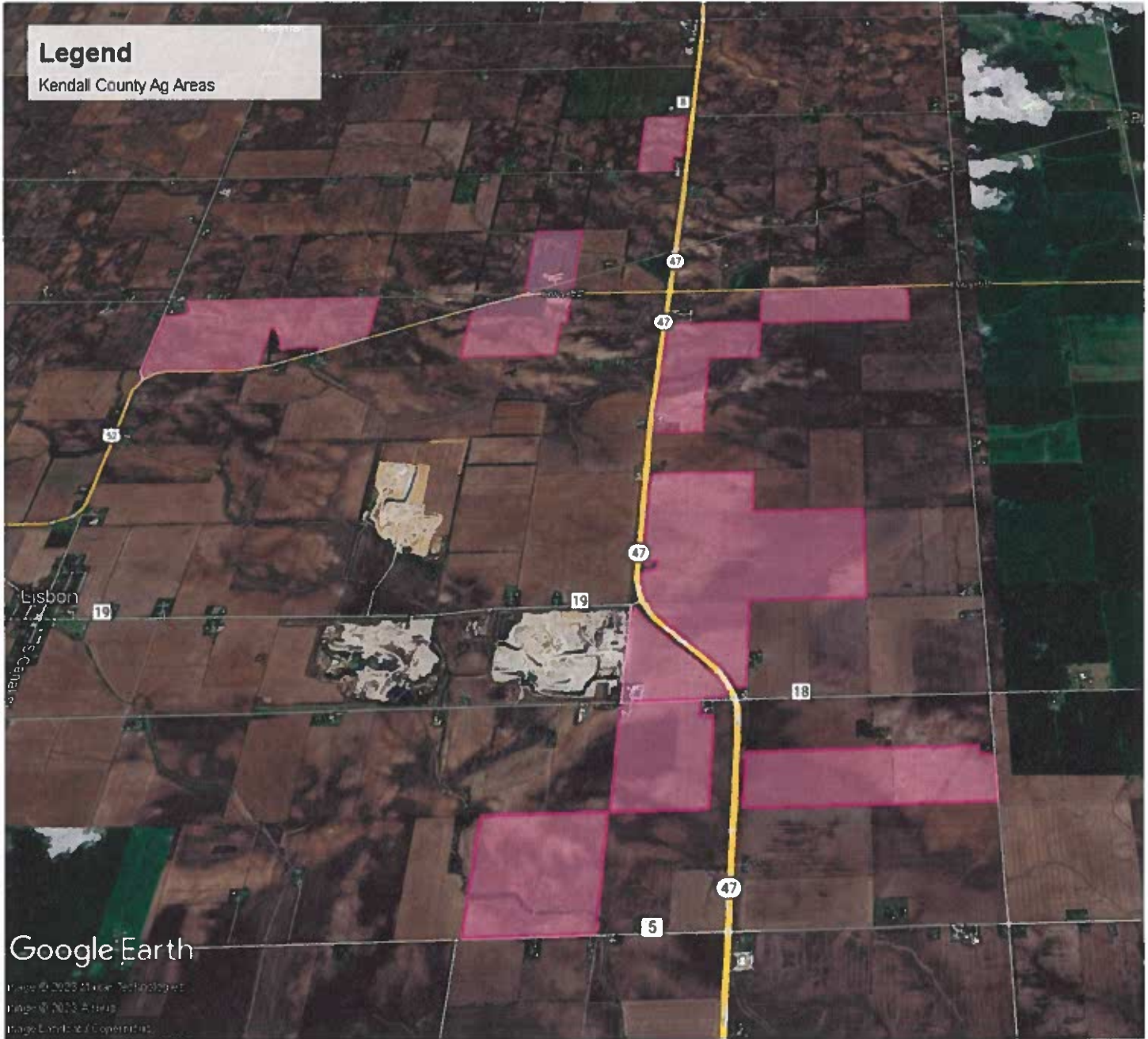
Counties with  
**Agricultural  
 Areas**  
 December 29, 2023

# Will County Ag Areas





# Kendall County Ag Areas



12/29/2023

Division of Natural Resources  
Bureau of Land and Water Resources

