

Signs and Symptoms of the Emerald Ash Borer

Mary Wilson, MSU Extension. Eric Rebek, Michigan State University Dept. of Entomology

Adult

Larva



Michigan State University



Michigan State University



D. Cappaert, MSU

- Bright, metallic green (Figs. A, B).
- 1/2 inch long, flattened back (Figs. A, B).
- Purple abdominal segments beneath wing covers.

- Creamy white, legless (Fig. C).
- Flattened, bell-shaped body segments (Fig. C).
- Terminal segment bears a pair of small appendages.

Canopy Dieback



E. Rebek, MSU



E. Rebek, MSU

- Begins in top one-third of canopy (Fig. D).
- Progresses until tree is bare (Fig. E).

Epicormic Shoots



J. Smith, USDA APHIS PPQ



J. Smith, USDA APHIS PPQ

- Sprouts grow from roots and trunk (Figs. F, G).
- Leaves often larger than normal.



MICHIGAN STATE UNIVERSITY EXTENSION



Bark Splitting



J. Smith, USDA APHIS PPQ



A. Storer, Mich. Tech. Univ.

- Vertical fissures on bark (Fig. H) due to callous tissue formation (Fig. I).
- Galleries exposed under bark split.

Serpentine Galleries and D-shaped Exit Holes



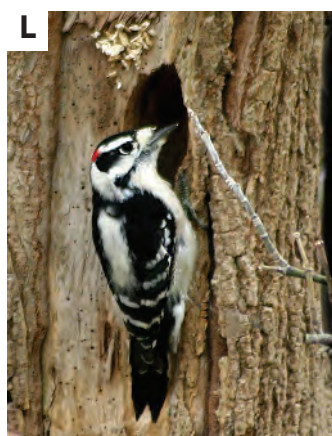
D. Cappaert, MSU



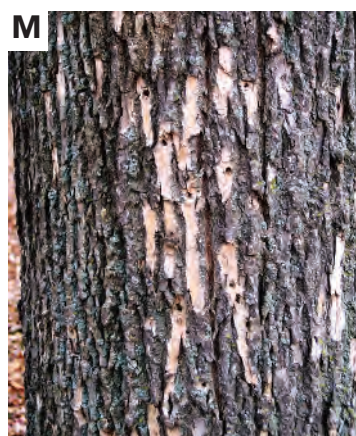
D. Cappaert, MSU

- Larval feeding galleries typically serpentine (Fig. J).
- Galleries weave back and forth across the wood grain.
- Packed with frass (mix of sawdust and excrement).
- Adults form D-shaped holes upon emergence (Fig. K).

Increased Woodpecker Activity/Damage



D. Cappaert, MSU



Karen D'Angelo, MSUE

- Several woodpecker species (Fig. L) feed on EAB larvae/pupae.
- Peck outer bark while foraging (Fig. M).
- Create large holes when extracting insects (Fig. M).