

State of Illinois  
Rod R. Blagojevich, Governor

Department of Agriculture  
Charles Hartke, Director



# EAB NEWS

DEC 07

EAB NEWS ~  
VOLUME 1, ISSUE 8

## IDA Welcomes New EAB Program Manager



The Illinois Department of Agriculture welcomes Paul Deizman as the new EAB Program Manager. Paul comes to us with 13 years of experience having worked for the Illinois Department of Natural Resources in the Division of Forest Services and most recently two years with the Tennessee Department of Agriculture's Division of Forest Services.

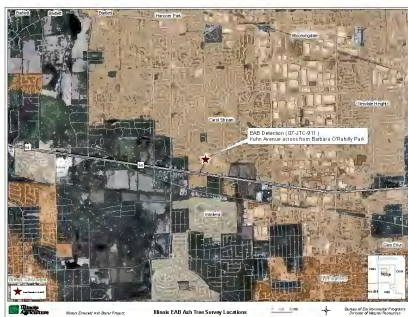
Mark Cinnamon who was acting in that capacity will continue on with his original duties as the State Plant Regulatory Official and Nursery Manager and northeastern field operations man-

ager. Mark will be working closely with Paul as Paul assumes the EAB program manager's duties.

Paul's role is to coordinate and manage the EAB program and keep the EAB staff on task. The overall goals and objectives of the EAB program remain survey, control/eradication and outreach. Warren Goetsch, IDA's Environmental Programs Bureau Chief says, "We are confident in Paul's capabilities to manage the EAB program and grateful for all the work that Mark Cinnamon has done thus far above and beyond his normal duties."

## EAB Job Posting

The Illinois Department of Agriculture is seeking qualified candidates to fill several vacancies for Plant and Pesticide Specialist I positions within the EAB program. A complete job description and requirements for training and experience can be found on our website at [www.IllinoisEAB.com](http://www.IllinoisEAB.com)—click on Job Postings.



## Emerald Ash Borer Discovered Along Klein Creek Tributary in Carol Stream

The Illinois Department of Agriculture notified Carol Stream officials that during their coordinated EAB surveillance efforts in DuPage County, they detected two EAB-infested ash trees in and along the Klein Creek tributary adjacent to both Volunteer Park and Carol Stream Fire Protection District Headquarters which is located north of North Ave. near the intersection with Kuhn Rd. State Agriculture officials were drawn to the trees as they demonstrated signs of vertical dieback at the top of the leaf canopy indicative of EAB infestation. A field inspection of the trees discovered the tell-tale D-shaped exit holes made by the borer. Residents are advised that state field inspectors with the IL. Dept. of Agriculture will be inspecting public trees in and around ground zero of the infestation to determine the extent of the infestation's spread. Field inspectors will be easily identified through photo identification badges worn on their jacket and will be traveling in agency marked vehicles.

The EAB was first discovered in DuPage County this past July at the Concord Green shopping Center in Glendale Heights located at the intersection of North Ave. and Bloomingdale Rd. For the past

several years, Village officials and staff have been vigilant in their efforts to educate themselves and the residents about the EAB and its possible impact on the community's tree resources. Detailed planning efforts by the Public Works Department staff to address this outbreak have included maintaining a current inventory of parkway trees totaling 7,000, of which approximately 2,750 (40%) are ash trees. Other steps the Village has taken include removing ash trees from the approved subdivision tree code, removing them as a parkway tree program specie, signing a compliance agreement with the IL. Dept. of Agriculture that details rules for moving ash materials out of a quarantined zone and developing a preliminary tree replacement budget should Village trees become infested with the emerald ash borer.

The Village Board recently approved a tree purchasing agreement with a regional nursery to set aside a portion of their growing stock for the Village's reforestation efforts should the need come to pass. This tree purchasing agreement allows the Village to buy up to 150 trees a year for the next 5 years at a set cost of \$219 per tree through 2012. Also during their November 19<sup>th</sup> regular meeting, the Village Board approved to set aside \$2.25 million dollars in fund balance to develop an EAB program that furthers the Village's surveillance efforts and advances the Village's community ash reduction effort critical in combating the outbreak.



# EAB Survey Status in Illinois

Members of the EAB Management and Science Advisory Task Force met on Tuesday, November 27, 2007 at the Department's DeKalb office. Members were briefed on the status of the EAB destructive, barkpeeling survey, IDA & USDA staffing, compliance with state and federal regulations, communications & outreach activities, possible eradication cut at the Peru infestation site, and the draft 2008 federal detection program guidance. Representations of the Morton Arboretum, University of Illinois Extension, Illinois Department of Natural Resources, USDA-APHIS, USDA-FS, Illinois Department of Transportation, and Illinois Department of Agriculture were present at the meeting. Members voiced support for a combination of methods for EAB survey work in 2008 consisting of limited trap trees, destructive-barkpeeling, and attractant-baited plastic adult traps.

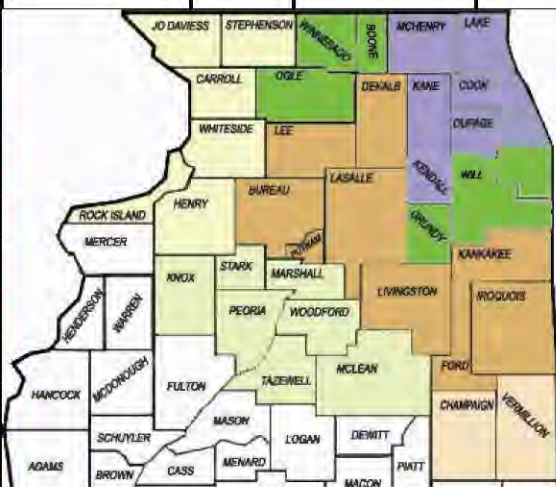
of EAB infestation. Processing of survey tree samples have been completed in Kendall, Lake, McHenry, DuPage, northern Cook, and central Cook Counties. IDA staff members have now finished locating survey trees in Bureau, Cook, Lee, LaSalle, Lake, Will, DuPage, Grundy, DeKalb, Iroquois, McHenry, Kankakee, Ogle, Boone, Ford, Putman, Livingston, and Winnebago counties. IDA staff members have been working with city foresters, representatives of municipalities, law enforcement officials, and others to initiate and carry out the surveys. Department staff is also conducting additional delimiting survey work in and around the four township sections surrounding the Peru infestation site. The delimiting data will be used to complete the final evaluation regarding whether to conduct an "eradication" cut at the site.

**EAB survey activities** – The Department continues to harvest and analyze survey trees in northern Illinois. IDA's tree contractor (Alvarez, Inc.) is currently harvesting survey trees in southern Cook and DuPage Counties. Twenty-three (23) survey trees were harvested during the last week. The harvested tree sections are being transported to a bark-stripping station located at the Bloomingdale Public Works Department facility where IDA survey crews process the sections looking for signs

**EAB outreach activities** – Department staff continue to meet with various individuals and groups regarding the current EAB program and what local groups can do in response to EAB. On November 28 IDA staff conducted a tour and peeling demonstration at a Carol Stream Park District park adjacent to the detection site for area city and village officials.

Priority Zone 1		Priority Zone 2		Priority Zone 3		Priority Zone 4	
County	Trees	County	Trees	County	Trees	County	Trees
√ Lake	112	/ Kankakee	166	Stephenson	141	/ Putnam	40
√ Northern Cook	33	/ Iroquois	279	Jo Daviess	150	Marshall	96
√ Central Cook	33	Vermillion	225	Carroll	111	Stark	72
⇒ Southern Cook	33	Champaign	249	Whiteside	171	Knox	179
⇒ Will	209	/ Ford	121	/ Bureau	217	Peoria	155
√ DuPage	83			Henry	206	Woodford	132
√ McHenry	151			Rock Island	106	Tazewell	162
√ Kane	Limited					McLean	296
√ Kendall	90					/ Livingston	261
⇒ Grundy	10						
/ LaSalle	263						
/ DeKalb	158						
⇒ Boone							
⇒ Winnebago	126						
⇒ Ogle	169						
/ Lee	181						

√ **Completed Survey**  
 / **Completed survey tree selection — bark stripping will commence later.**  
 ⇒ **Working in**







# Make Use of Your Reclaimed Ash

In the future, if your ash tree becomes infested with the Emerald Ash Borer and has to be removed, there are other options to simply cutting it down and having the wood chipped into mulch. That's the reasoning behind a recent request from the Illinois Department of Agriculture to various northern Illinois furniture makers. The Department requested area furniture makers to submit design ideas for furniture that could be made from reclaimed ash wood. The overall purpose of the request was to promote the utilization of reclaimed ash to residents and communities affected by the Emerald Ash Borer. Rather than mulching the wood from infested trees into land-

scape waste, those once beautiful ash trees could be turned into a beautiful piece of furniture that could adorn homes rather than needlessly add material to our landfills. The resulting design ideas submitted by area craftsmen are depicted on pages 3 and 4 and are just a sampling of imaginings that can be made with reclaimed ash. Think about what needs you may have, cabinets?, bowls? wood flooring? planter boxes? or a desk for the office? The possibilities are endless. Think *GREEN* and recycle trees. These ideas can make great gifts.



**Podium**

**Dwayne Sperber**  
**Furniture Maker**  
**N11 W 31868 Phyllis Parkway**  
**Delafield, WI 53018**  
**262-442-4654**  
[dsfurnituremaker@wi.rr.com](mailto:dsfurnituremaker@wi.rr.com)

**1. Table**

**2. Chair**

**Dolly Spragins**

**Chicago Furniture Designers Association**

**773-573-9339**

[www.dollyspragins.com](http://www.dollyspragins.com)



1.

2.



1.



2.

- 1. Indoor dog sanctuary**
- 2. Wall mounted organizer**
- 3. Bench**

**Lisa Richardson Elkins**  
**- 2 Point Perspective inc -**  
**2120 N Bissell Street**  
**Chicago Il 60614**  
**773.529.7541**

[www.2pointPerspective.net](http://www.2pointPerspective.net)



3.



1.



2.

- 1. Dictionary Stand**
- 2. Occasional Stool**

**Robert G. Frazier**  
**Frazier Studio**  
**1782 N. Clybourn Ave.**  
**Chicago, IL 60614**  
**269-637-5422**  
[rgfrazier@mac.com](mailto:rgfrazier@mac.com)

# Making Use of Reclaimed Ash



Continued from the article on Page 3, these are design ideas from furniture makers who will turn the wood taken from an infested ash tree and craft it into a beautiful piece of furniture to

enjoy for years to come. Please contact any of these furniture makers or others you may know to make good use of reclaimed ash.



2.



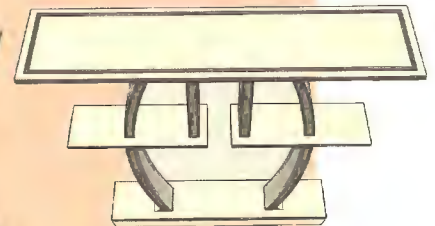
1.



3.

- 1. Hall Table
- 2. Pedestal
- 3. Mirror

Barry Newstat  
Barry Newstat furniture  
1515 Race Street  
Western Springs, IL 60558  
708-287-2404  
[barry@barrynewstatfurniture.com](mailto:barry@barrynewstatfurniture.com)



## Hall or sofa table

Matt Seiler  
M.S. Woodcraft  
7707 W. 162nd Place  
Tinley park, IL 60477  
708-532-1933  
[mwoodcraft@flash.net](mailto:mwoodcraft@flash.net)



If you suspect EAB, please contact your city forester or local arborist or take digital photographs of the tree and the symptoms it is expressing and email them with contact info to:

[AGR.EAB@Illinois.gov](mailto:AGR.EAB@Illinois.gov)



Illinois Department of Agriculture ~ DeKalb Office  
2280 Bethany Road, Suite B ~ DeKalb, IL 60115

815/787-5476 ~ 815/787-5488 fax

[WWW.ILLINOISEAB.COM](http://WWW.ILLINOISEAB.COM)

Hotline: 800/641-3934

