

# ILLINOIS DEPARTMENT OF AGRICULTURE IN ASIA

The Illinois Department of Agriculture actively promotes its food and agricultural products in both domestic and international markets. In 1973, the Department established an office in Hong Kong to serve the Asian region, with the primary objective of facilitating contacts between overseas companies and their Illinois counterparts.

## WHAT OUR ASIA OFFICE CAN DO FOR YOU

- Respond to importer, distributor, broker, foodservice and retail merchant requests for products and product information from Illinois
- Assist Illinois food and agricultural producers seeking Asian distribution
- Facilitate business contacts/meetings between Illinois suppliers and Asian buyers
- Provide market information and consulting services
- Assist in organizing numerous trade missions for Asian buyers to tour Illinois' food and agriculture industries
- Coordinate Illinois' participation at various trade shows/promotional events throughout Asia



## CONTACT US!

If you plan to import agricultural products into Asia from the U.S., explore Illinois first. To begin this exploration, contact our Asia office in Hong Kong. We will be glad to be of service, at no cost or obligation to you.

### Illinois Department of Agriculture - Asia Office

Room 2808, Wu Chung House, 213 Queen's Road East, Wanchai, Hong Kong  
Tel: (852) 2504-0123 Fax: (852) 2576-5766 E-mail: [idoahk@hkstar.com](mailto:idoahk@hkstar.com)  
Website: [www.agr.state.il.us](http://www.agr.state.il.us)  
Contact Person: Hailey Hui, Trade Director

## DID YOU KNOW ?

Illinois usually **rank**  
**2<sup>nd</sup>** in the U.S.  
in corn and soybean  
production; and **rank**  
**4<sup>th</sup>** in pork production.

Illinois is home  
to **14 of 204**  
ethanol plants  
in the U.S.

Illinois ranks  
**3<sup>rd</sup>** in the U.S.  
in total agricultural  
exports, reaching  
more than  
**\$8 billion**  
in 2011.

Illinois food processing  
contributes more than  
**\$13 billion**  
to the value of raw  
agricultural products.

**6.25 million tons** of distillers  
dried grains & solubles for livestock feed  
are produced in Illinois per year, worth  
**\$1.375 billion**

For a searchable database of Illinois companies and products, visit our Food and Agribusiness Guide: [www.agr.state.il.us/markets/mis](http://www.agr.state.il.us/markets/mis)



Asia Office  
Hong Kong

## ILLINOIS AGRICULTURE



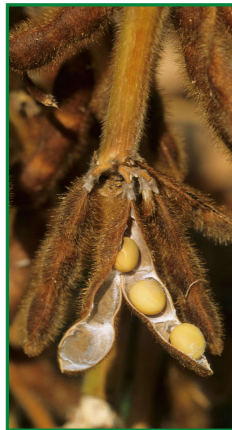
Illinois means agriculture! With more than 74,600 farms covering nearly 10.76 million hectares, 75% of the state's total land area, Illinois stands out as a top producer of corn, soybeans and pork, and also grows specialty crops, is a leader in the production of ethanol, has a booming food manufacturing industry, and ranks among the top states in exports.

Illinois' fertile soil, favorable climate and availability of transportation via water, highway, rail and air, allow the state to be world supplier of food, feed and fiber.

Illinois is one of the nation's top producers of corn and soybeans - usually ranking second in the U.S. in the production of each - this easy access to abundant grain also makes it a top producer of swine, since pork production is one of the largest consumers of the state's top two crops.



Illinois' abundance of corn also allows it to be one of the leading states in ethanol production. Illinois is home to the National Corn-to-Ethanol Research Center, where researchers seek new technologies for producing fuel ethanol more effectively.



In addition to Illinois' top commodities, the state's 1,500 different soil types allow for an abundance of specialty crops. Pumpkins, wine grapes, peaches, popcorn and several others are also grown in the state's rich soils.

In addition to farming, Illinois is a leading state in agriculture-related industries, including soybean processing, meat packing, dairy manufacturing, feed milling, vegetable processing, machinery manufacturing, and foreign exports.

Illinois is a U.S. leader in food processing and in the export of processed foods with more than \$3.4 billion exported in 2011. Illinois is home to more than 2,500 food manufacturing companies.

Illinois ranks third in the U.S. in total agricultural exports, reaching more than \$8 billion in 2011.



## ILLINOIS' UNIQUE LOCATION FACILITATES EXPORTS



Illinois offers companies a location at the heart of the nation with an expansive transportation network that can connect them to virtually any market in the world, minimizing travel distances and permitting the low overall transportation costs.

### ■ RAILWAYS

Illinois is the center of the nation's rail network; Chicago is home to the largest rail gateway in the U.S., connecting the east and the west. More than 50 railroads provide service to every corner of the nation from Illinois.

### ■ WATERWAYS

We have more than 1,118 miles (1,798 kilometers) of waterways that border or pass through the state providing a direct link to the Atlantic Ocean and the Gulf of Mexico. One of the world's great transportation waterways, the Mississippi River, runs along the entire western side of the state into the Gulf of Mexico. Illinois is not landlocked; Chicago faces Lake Michigan, which is connected to the St. Lawrence Seaway to give ready access to the Atlantic Ocean.

### ■ HIGHWAYS

There are over 2,000 miles (3,200 kilometers) of interstate highways and 34,500 miles (55,500 kilometers) of other state highways in Illinois, making trucking of goods fast and efficient.

### ■ PORTS

Thirteen port districts are located in the state, offering companies direct links to the Atlantic Ocean and Gulf of Mexico.

### ■ AIRPORTS

Illinois has almost 1,000 airports. Chicago is also home to O'Hare International Airport, providing airfreight shipments to all over the world. Chicago's O'Hare International Airport is one of the world's busiest airports.

## ILLINOIS AGRICULTURAL INDUSTRY TOURS — Pork, Grain and Dairy



The Illinois Department of Agriculture hosts three big industry tours - pork, grain (annual) and dairy (biennial).

International agricultural industry players are invited to participate in a 4-day tour to see what Illinois has to offer in the respective industry. Tour participants have an excellent opportunity to visit outstanding livestock farming operations, meet with corn and soybean farmers and feed ingredient suppliers, visit the University of Illinois, Chicago Board of Trade and Chicago Mercantile Exchange, etc. For details of the tours, please contact our Asia Office in Hong Kong.



- IL Pork Tour in conjunction with the annual World Pork Expo
- IL Dairy Tour in conjunction with the World Dairy Expo
- IL Grain Tour to highlight corn, soy, and DDGS.